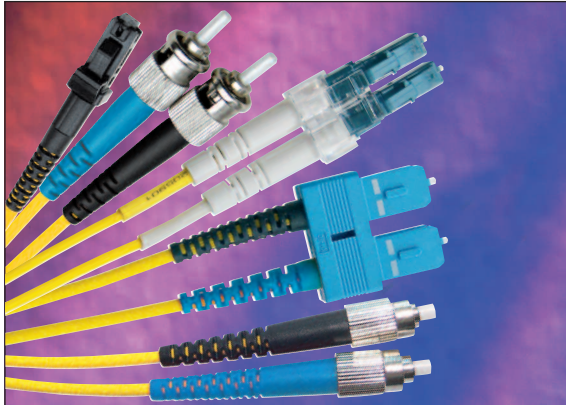




## Excel Fibre Optic Duplex Patch Leads – Singlemode OS1 9/125



25 year warranty

G.652.D Compliant

100% Optical Test

Test Certificate with each cable

Batch Number Tracking

### Features

- Low smoke zero halogen cable
- Yellow outer sheath
- 900 or 600 micron 9/125 duplex cable
- Broad range of connectivity options
- High quality connectors
- Each cable is individually bagged and labelled
- Receive and transmit legs clearly indicated
- Factory terminated under ISO9001 quality control procedures

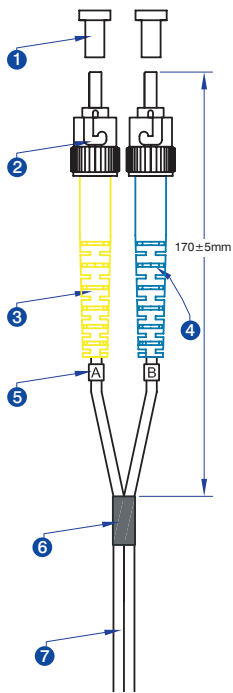
### Product Overview

Excel duplex patch leads are manufactured from the highest quality 900 or 600 micron optical fibre, terminated with ceramic (or in the case of MTRJ cables composite) ferrule connectors of various types. Cable preparation, termination and testing is carried out to strictly managed procedures in an Excel approved manufacturing facility. Applications include the connections between optical patching panels and network or server equipment and directly from devices to the local or wide area network or physical security equipment

Each cable has strain relief boots to prolong and maintain performance levels of the assembly, transmit and receive 'legs' of each duplex cable are identified by means of ring type cable marker fixed to each end the assembly. A short distance from these identification rings heat shrink is applied to maintain an easy to manage bonded two fibre cable, finally a label containing a unique batch number is fixed to the centre of cable for quality and traceability purposes.

## Product Schematics

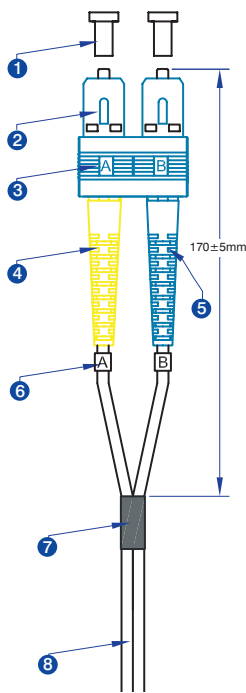
### ST



- 1 ST Dust cover
- 2 ST 3.0 singlemode connector\*
- 3 ST 3.0 Yellow strain relief boot\*
- 4 ST 3.0 Blue strain relief boot\*
- 5 Identification ring
- 6 Black heatshrink tubing
- 7 3.0mm Duplex OS1 9/125 LSOH Yellow cable\*

\* 2.0 when used in hybrid cables with LC or MTRJ connectors

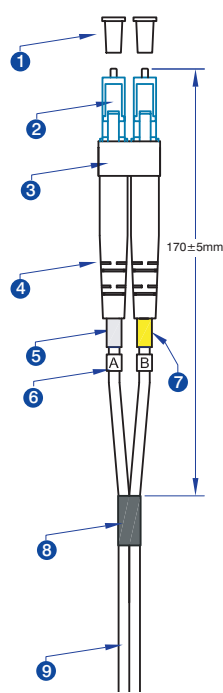
### SC



- 1 SC Dust cover
- 2 SC 3.0 Blue singlemode connector\*
- 3 SC Blue clip
- 4 SC 3.0 Yellow strain relief boot\*
- 5 SC 3.0 Blue strain relief boot\*
- 6 Identification ring
- 7 Black heatshrink tubing
- 8 3.0mm Duplex OS1 9/125 LSOH Yellow cable\*

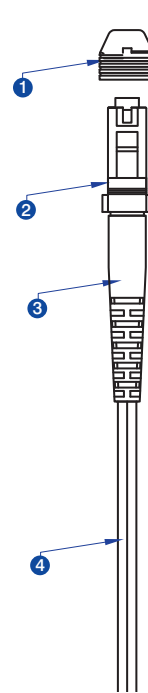
\* 2.0 when used in hybrid cables with LC or MTRJ connectors

### LC



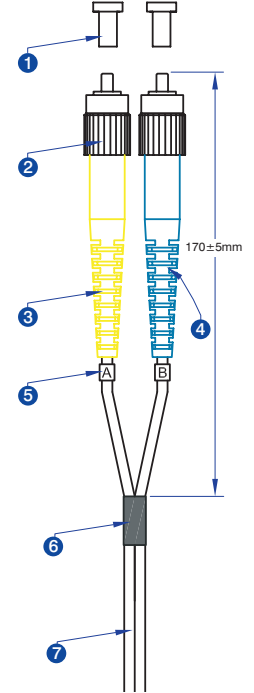
- 1 LC Dust cover
- 2 LC 2.0 singlemode simplex Blue connector
- 3 LC Blue clip
- 4 LC 2.0 white boot
- 5 White heatshrink tubing
- 6 Yellow heatshrink tubing
- 7 Identification ring
- 8 Black heatshrink tubing
- 9 2.0mm Duplex OS1 9/125 LSOH Yellow cable

### MTRJ



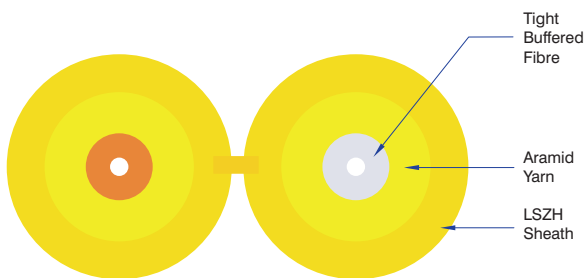
- 1 MTRJ dust cover
- 2 MTRJ 1.8 multimode Black connector
- 3 MTRJ 1.8 Black strain relief boot
- 4 1.8mm Duplex OS1 9/125 LSOH Yellow cable

### FC

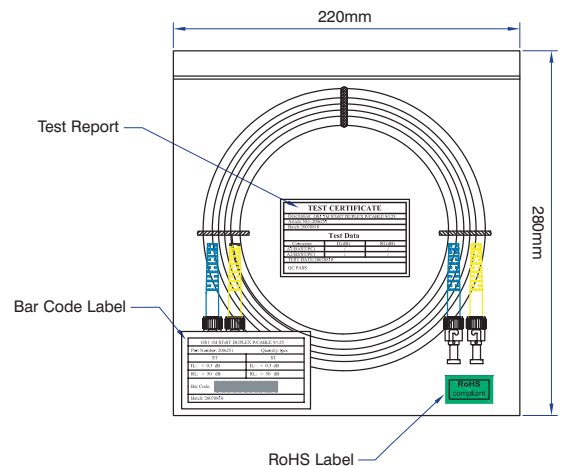


- 1 FC Dust cover
- 2 FC 3.0 singlemode connector
- 3 FC 3.0 Yellow strain relief boot
- 4 FC 3.0 Blue strain relief boot
- 5 Identification ring
- 6 Black heatshrink tubing
- 7 3.0mm Duplex OS1 9/125 LSOH Yellow cable

## Cable Profile



## Packaging



## Performance Characteristics

### Connector

Measure	ST Connector	SC Connector	LC Connector	MTRJ Connector	FC Connector
Insertion Loss dB @1310nm	< 0.3	< 0.3	< 0.3	<0.7	<0.3
Return Loss dB @1310nm	> 50	> 50	> 50	> 30	> 50
Ferrule	2.5mm ceramic	2.5mm ceramic	1.25mm ceramic	Composite	2.5mm ceramic
Housing	Nickel Brass	Composite	Composite	Composite	Nickel Brass
Connector Design	IEC60874-10-1997	IEC61754-4	IEC61754-20	IEC61754-18-2001	IEC61754-13-2006

### Cable

Measure	ST Assembly	SC Assembly	LC Assembly	MTRJ Assembly	FC Assembly
Attenuation Max dB @1310nm	<0.4	<0.4	<0.4	<0.4	<0.4
Attenuation Max dB @1550nm	<0.3	<0.3	<0.3	<0.3	<0.3
Dispersion Coefficient ps (nm/km) @1310nm	<3.0	<3.0	<3.0	<3.0	<3.0
Dispersion Coefficient ps (nm/km) @1550nm	<18.0	<18.0	<18.0	<18.0	<18.0
No of Fibres	2	2	2	2	2
Outer Diameter WxH in mm	2.8 x 5.7	2.8 x 5.7	2.0 x 4.1	1.8 x 3.7	2.8 x 4.1
Outer sheath colour	Yellow	Yellow	Yellow	Yellow	Yellow
Outer sheath um	900	900	900	600	900
Outer sheath Material	IEC332-1 LSOH	IEC332-1 LSOH	IEC332-1 LSOH	IEC332-1 LSOH	IEC332-1 LSOH
Temperature range Deg/c	-20 to + 70	-20 to + 70	-20 to + 70	-20 to + 70	-20 to + 70
RoHS Compliant	Yes	Yes	Yes	Yes	Yes
Weight kg/km	13.2	13.2	8.2	6.7	13.2

### Availability

Excel duplex OS1 patch leads are generally available from stock in lengths from 1 to 30 metres. For requirements which may vary from this, such as specific length, colour or labelling requirements, please contact your local Excel distributor.



Excel is a complete, end-to-end networking solution, offering exceptional performance and support, manufactured to European quality standards and covered by one warranty.

Contact us at [sales@excel-networking.com](mailto:sales@excel-networking.com)

[WWW.EXCEL-NETWORKING.COM](http://WWW.EXCEL-NETWORKING.COM)