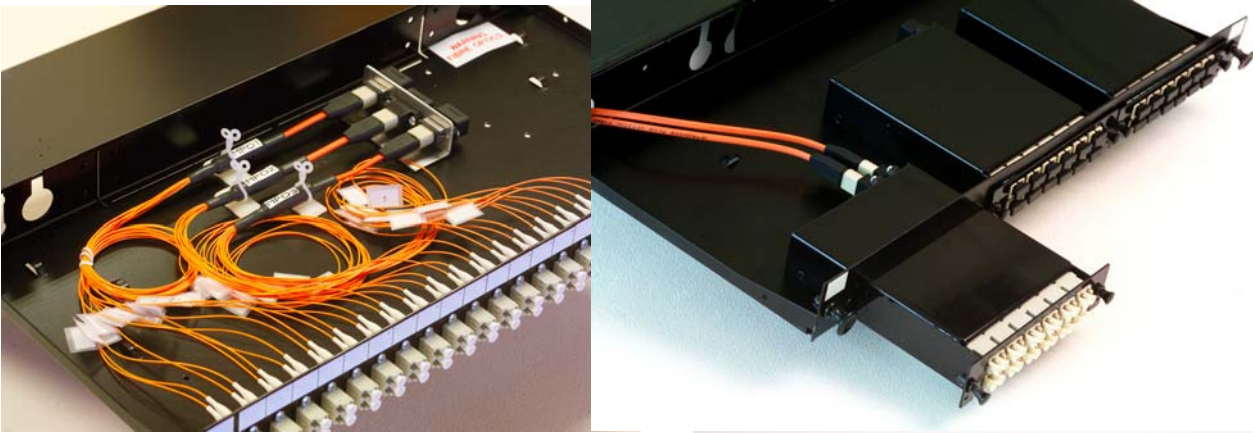


MPO Optical fibre system



The MPO Plug 'n' Play system is the perfect solution for today's optical fibre installations, designed to enable a fibre network to be installed and commissioned in the shortest possible time. An MPO installation does not require specialist engineers or special tools as each component of the **OPTRONICS** MPO system is packed with a certificate showing it's performance at the time of manufacture. This enables the installer to be sure the system will function from the moment the final part of the system is connected. The MPO system allows for the communication cabinets to be fully assembled in the installers own clean workshops allowing for the simple connection to the installed MPO cable assembly, when the system is commissioned.



The high density MPO connector allows simple plug 'n' play termination of the fibre backbone. Once installed the backbone needs to have the correct interface to suit the needs of the network hardware. Using the MPO connector on pre-terminated fibre solutions allows you to prepare the distribution units in the comfort of your own workshop. This can be taken a step further by having the distribution cabinets built in a clean facility and only taken to site when the installation is due to go live. MPO pre-termination saves time and reduces the possibility of damage to the fragile optical tails and reduces the risk of dirt ingress into fibre couplers.

The MPO is the answer to tomorrows challenges with pre-terminated fibre cable, but available from FibreFab today.

Site survey

MPO system is as simple as 1,2,3

1. The system design

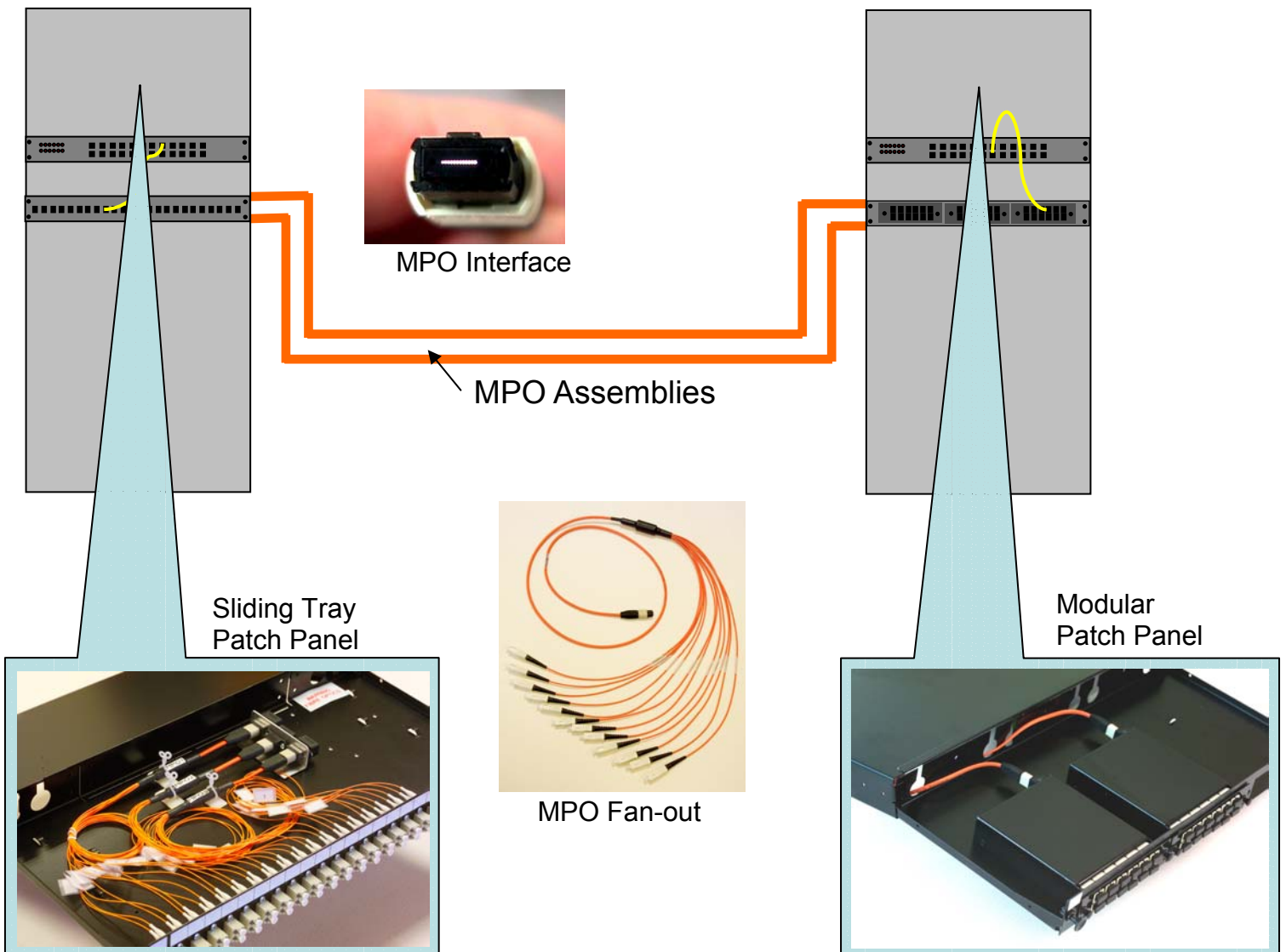
The system needs to be designed with consideration to the numbers of fibres required, and the type of connectors used on the active equipment. Where SC connectors are required the maximum number of connections using the modular patch panel is 36, but with LC and MT-RJ connectors the same panel can support up to 72 fibres. Where lower patch panel density is acceptable the standard sliding tray patch panel can be used.

2. The site survey

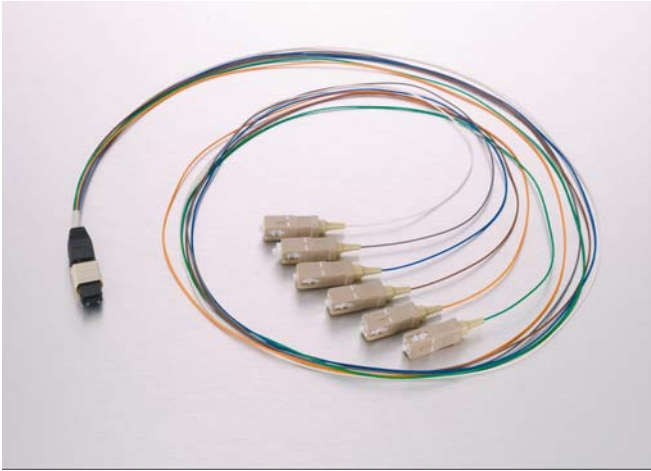
The installer is required to accurately measure the route in which the MPO assembly will be installed, allowing an extra 10% for cable slack. Also 3 metres at each end should be allowed for termination and management of the cables within the communication cabinet.

3. The installation

The MPO assembly is laid into position and loosely secured to the cable tray or supports with no bends smaller than 5cm radius. When pulling any optical fibre assembly into a building, the maximum pulling force MUST be adhered to, excess force will damage the cable, and the fibres within. Carefully loop any spare cable under or within the communications cabinet allowing for a stress free run to the rear of the patch panel. Dust is the enemy of all optical fibre systems, and so the dust caps MUST be left on the MPO assemblies until final connection is required. When the system is fully installed and ready for commissioning, remove the dust caps and immediately connect to the MPO fan-out or Module.

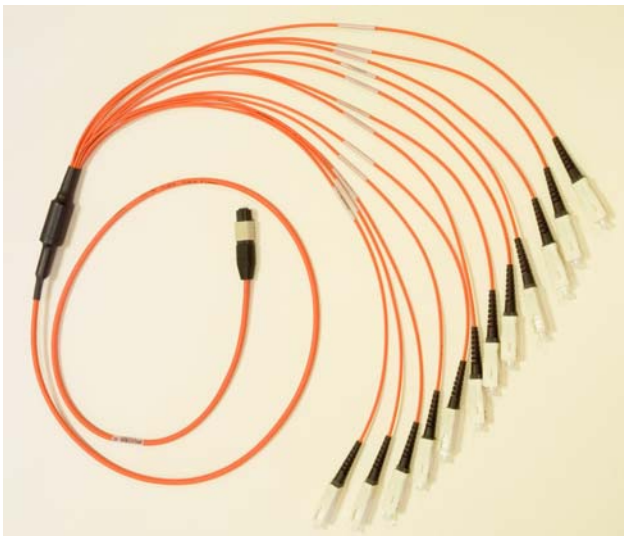


Cable assemblies



MPO Fan out

MPO fan-out for use inside patch panels and wall boxes. Available with SC, ST, FC, LC or MT-RJ terminations



MPO Ruggedised Fan-Out

MPO fan-out designed with special rugged cable to withstand direct connections within the communications cabinet. Available in SC, ST, FC, LC or MT-RJ terminations



MPO Cable assemblies

MPO cable assemblies pre-terminated for use in building cabling. Simply install the pre-terminated assembly within the building and connect to the rear of an MPO patch panel or ruggedised fan-out.

Patchpanels and modules



MPO Loaded Patch Panel

Black sliding tray patch panel pre-loaded for 24 ST, SC & FC and 48 LC or MT-RJ connections to MPO systems.

For more information and part numbers contact the FibreFab sales office



MPO 12 port SC module

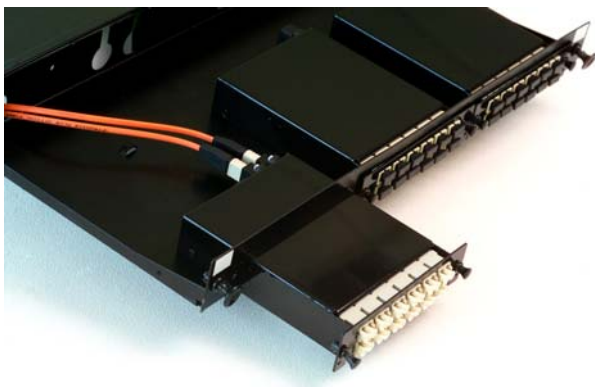
Black module pre-wired for 12 SC connections. Designed to fit modular sliding tray panel.



MPO 24 port LC module

Black module pre-wired for 24 LC connections via two MPO connections. Designed to fit modular sliding tray panel.

Modules also available with 12 MT-RJ connections.



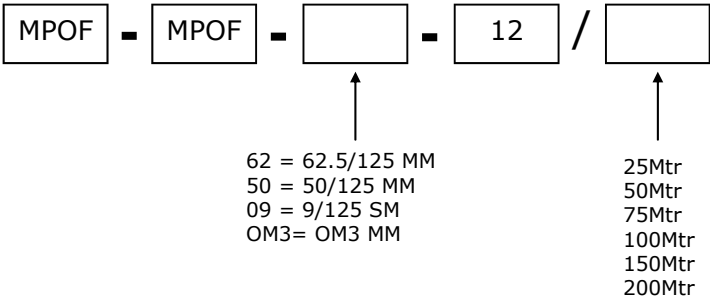
Modular Patch Panel

19" 1u Black sliding tray patch panel for 3 modules.

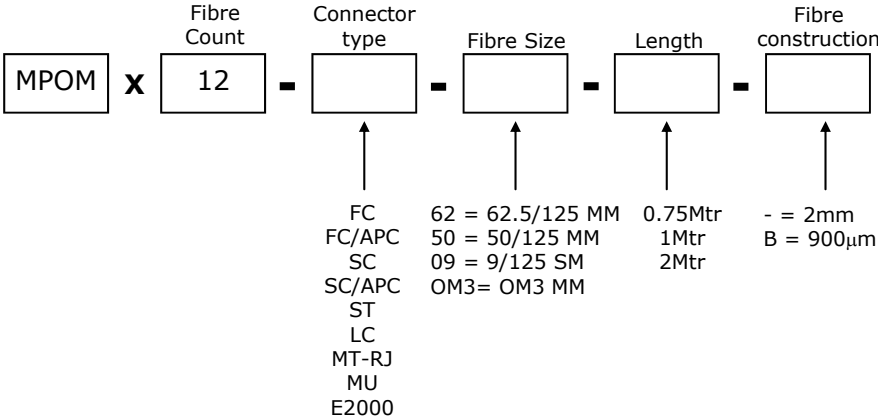
Supports up to 36 SC connections with 3 MPO links or 72 MT-RJ / LC connections with 6 MPO links.

Ordering information

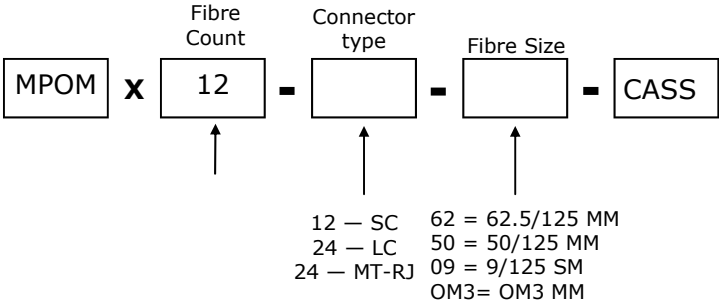
MPO Cable assemblies



MPO Fanout



MPO modules



FibreFab Limited

Witan Court
 305 Upper Fourth Street
 Central Milton Keynes
 MK9 1EH

Tel: +44 (0) 870 127 3330
 Fax: +44 (0) 870 127 3331
 Email: sales@fibrefab.com
 Internet: www.fibrefab.com

FibreFab Ltd is registered in England no. 2734823.